

# CDOT County Sheet Composer



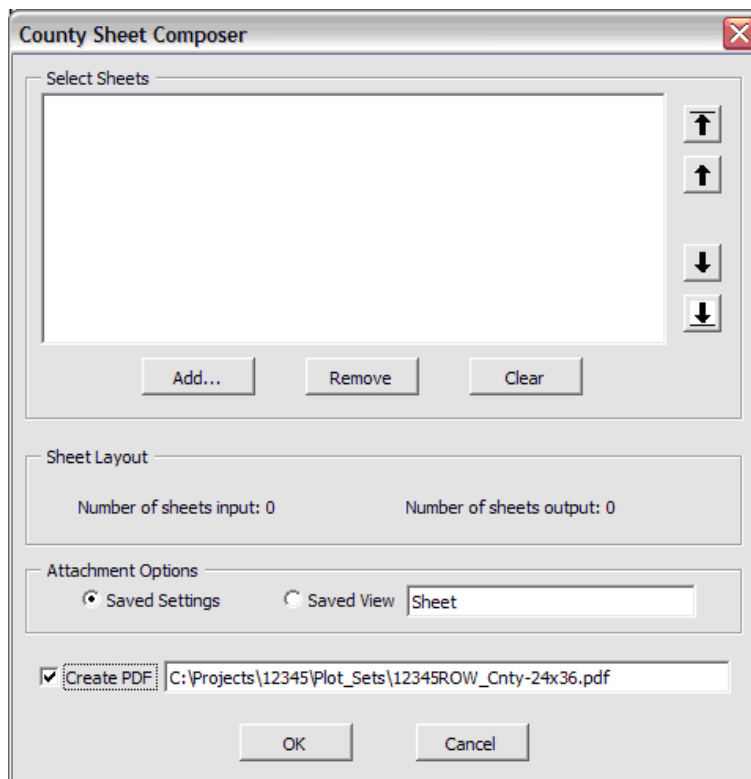
This document is designed to serve as a guide for automatically combining 11” x 17” format plan sheets from separate design files onto a single 24” x 36” sheet using the County Sheet Composer tool.

## Sheet File Creation

1. Create, construct, and/or assemble the individual 11” x 17” sheet files as you would normally.
2. Each 11” x 17” sheet must have its own sheet border shape on the level **Sheet\_Plot-Boundary**.
3. Do not create any blank 24” x 36” sheet files as you did previously, the County Sheet Composer tool will do this for you.

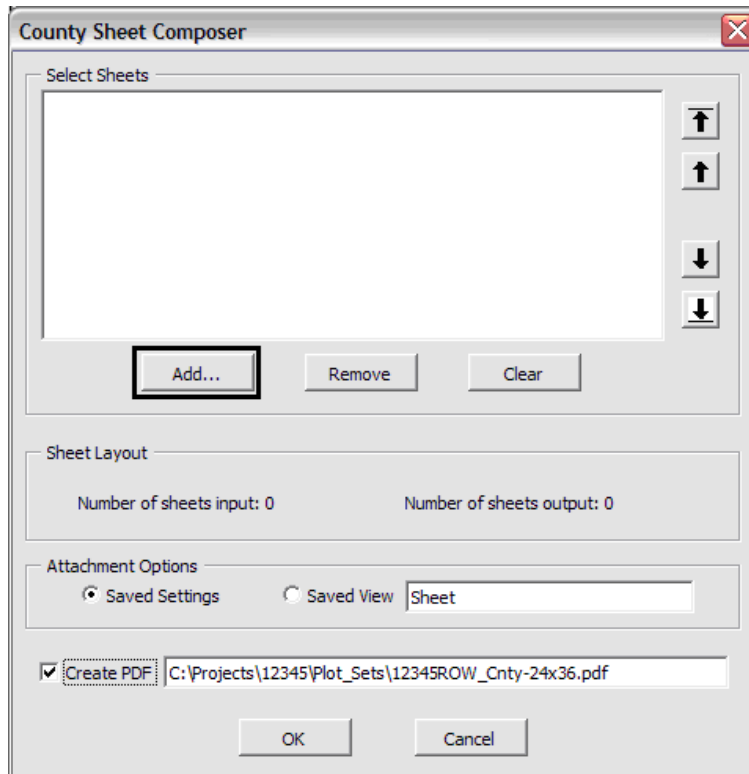
## Using County Sheet Composer

1. From the CDOT Menu, select **CDOT Tools > County Sheet Composer** to display the County Sheet Composer dialog.

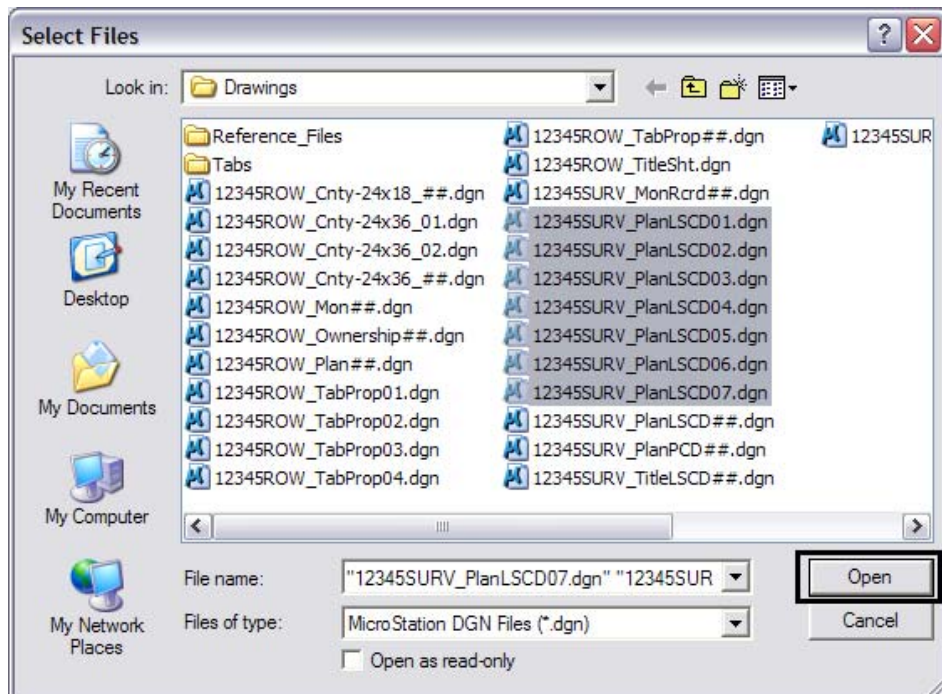


## CDOT County Sheet Composer.pdf

2. Add the 11" x 17" sheet files to the *Select Sheets* list by clicking the *Add...* button

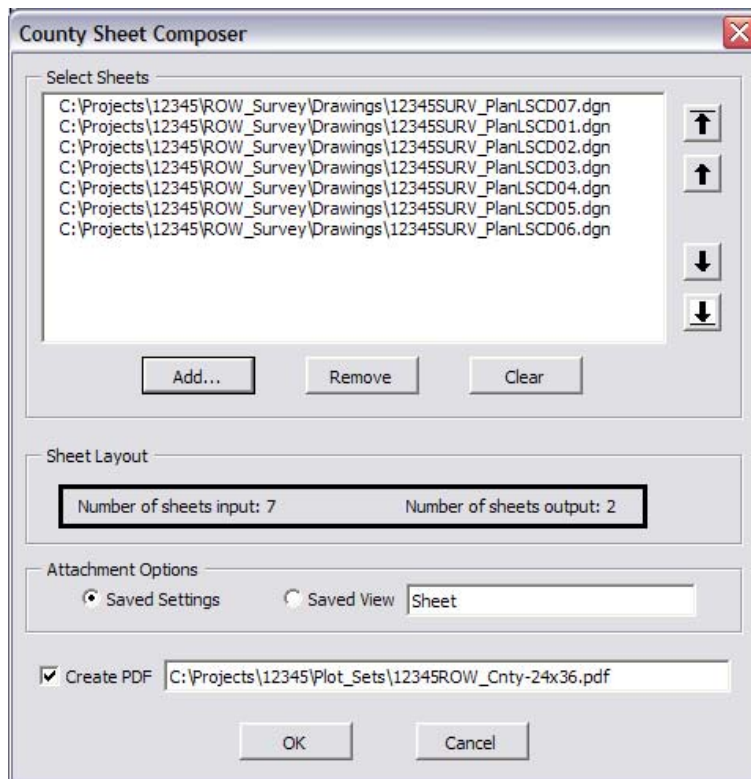


3. In the *Select Files* dialog select the 11" x 17" sheet files to be added, and then click *Open*.



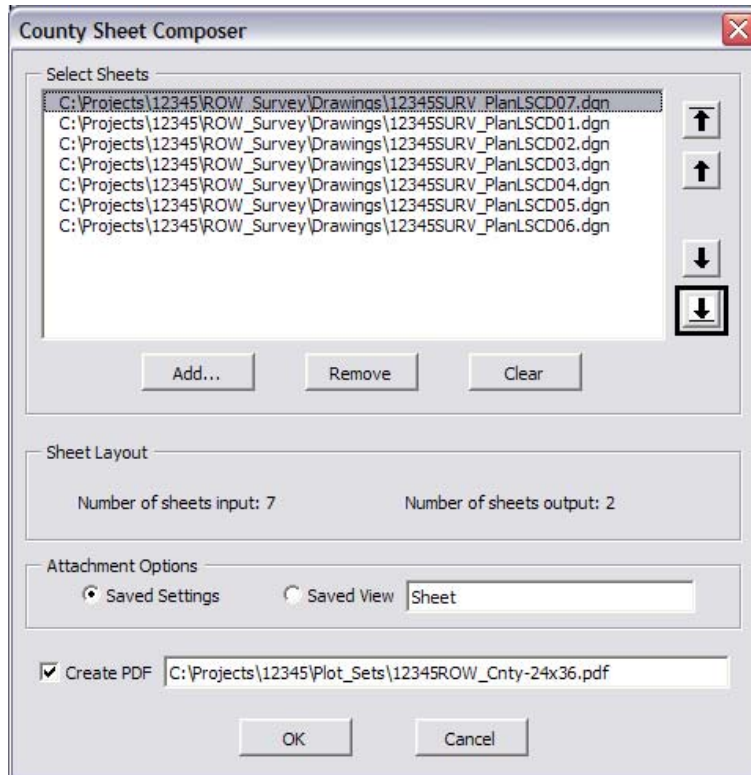
## CDOT County Sheet Composer.pdf

- The files will then be added to the **Select Sheets** list and the numbers in the **Sheet Layout** section will be updated accordingly. In this example seven sheets have been input and will result in two 24" x 36" output sheets.



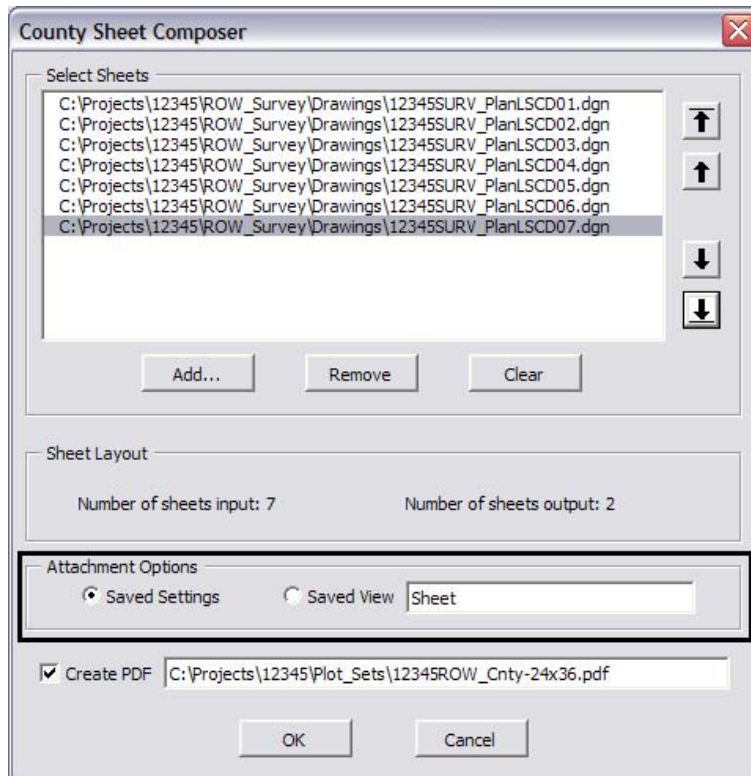
## CDOT County Sheet Composer.pdf

- The order in which the files appear in the *Select Sheets* list is the order in which they will be placed on the output 24" x 36" sheets. To change the order select the file you want to move from the list; then use the arrows to the right to move the file up or down.



## CDOT County Sheet Composer.pdf

6. Once the files are in the correct order select the desired *Attachment Option*



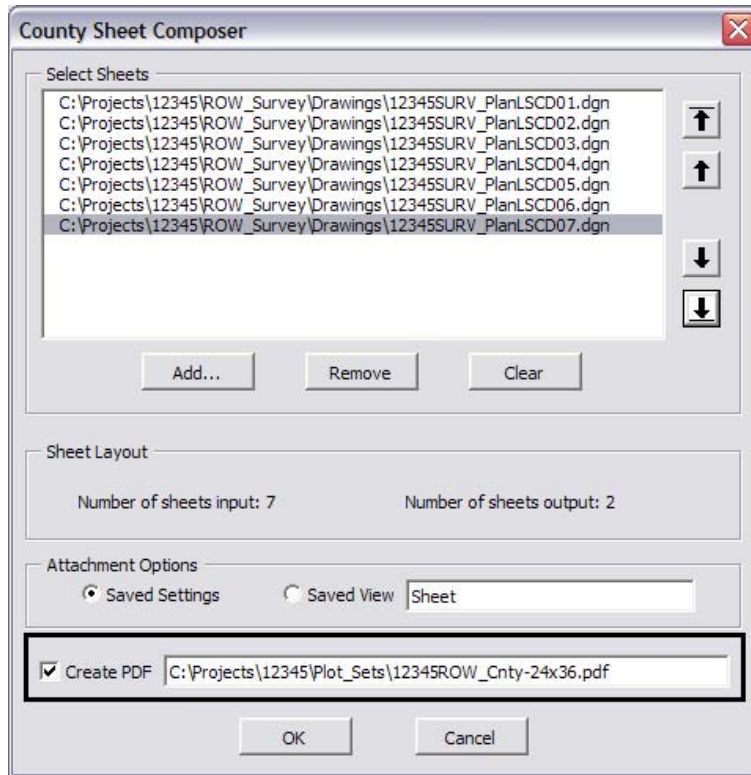
The *Attachment Options* tell County Sheet Composer what method to use when attaching the reference 11" x 17" sheets to the master 24" x 36" sheet.

**Saved Settings** will attach the reference using the default model. The attachment will display using the parameters set from the last time the **File > Save Settings** command was selected from the MicroStation pull down menu.

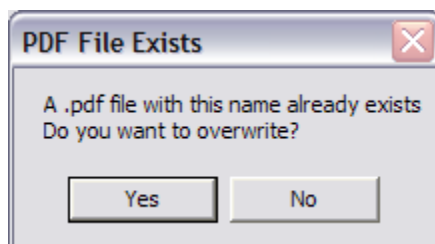
**Saved View** allows you to attach the reference using a MicroStation Saved View.

## CDOT County Sheet Composer.pdf

7. To create a single, multi-page PDF file containing all of the 24" x 36" output sheets **Check the *Create PDF* box** and specify the path and filename to create.

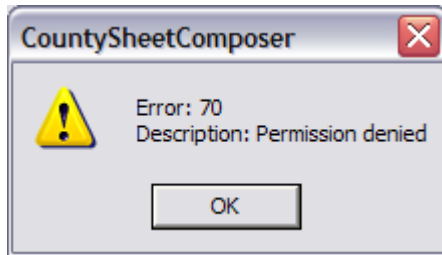


8. When all of the settings are correct click the **OK** button to create the sheets 24" x 36" sheets.
9. If you have checked the **Create PDF** option and the PDF file already exists a warning dialog will be displayed alerting you that the file exists. Click **Yes** to overwrite, or **No** to go back to the main dialog to change the file name.



## CDOT County Sheet Composer.pdf

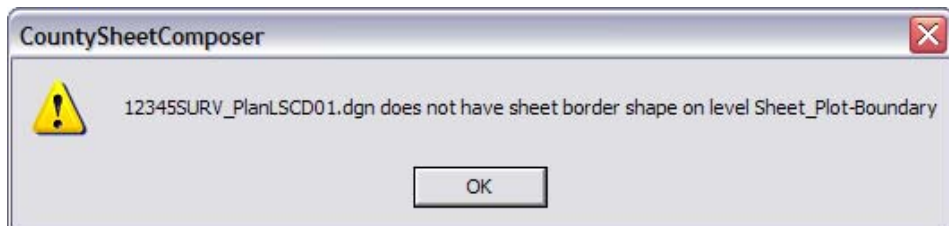
10. County Sheet Composer will automatically create the required 24" x 36" sheet files using the seed file <jpc>ROW\_Cnty-24x36\_##.dgn. If you have created these files manually, or are re-executing the County Sheet Composer, and have one of these 24" x 36" sheet files open you may receive the following warning.



If you receive this error message then click **OK** in the warning dialog, open a different design file that *is not* one of the files County Sheet Composer is attempting to create; then click **OK** on the County Sheet Composer dialog again.

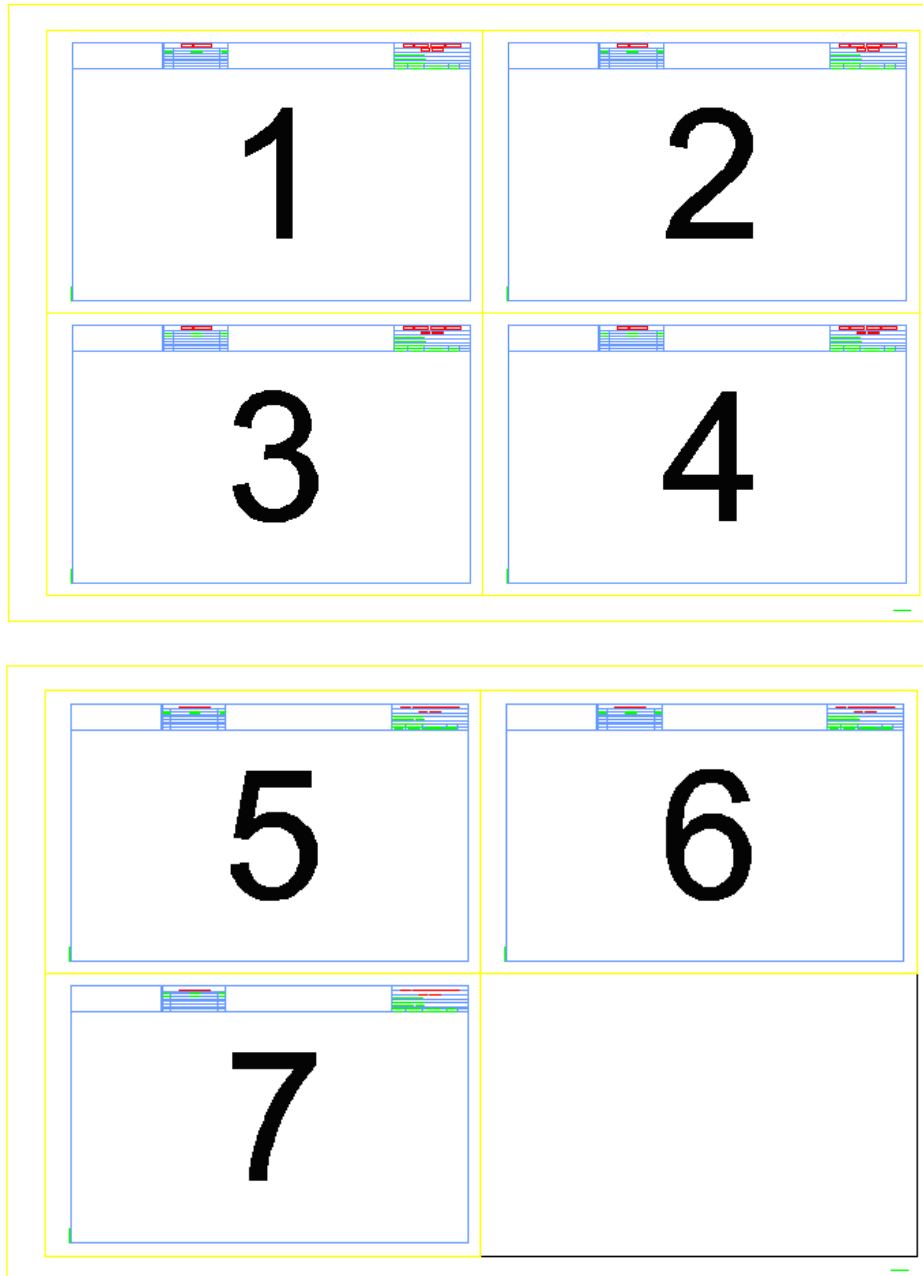
11. County Sheet Composer will process the dialog selections. A 24"x 36" sheet file will be created for every four input sheets. Each input sheet will be attached in the order it appears in the *Select Sheets* list. The program will automatically determine the proper scale and rotation for the input sheet using its sheet border shape when attaching it to the master 24" x 36" sheet.

If no sheet border is found in the input sheet file the following warning dialog will be displayed. Click **OK** and you will be returned to the main County Sheet Composer dialog.



Place a sheet border shape on the **Sheet\_Plot-Boundary** level in the offending file and then rerun County Sheet Composer.

12. Using the example seven files above County Sheet Composer will create two 24" x 36" sheet files (12345ROW\_Cnty-24x36\_01.dgn and 12345ROW\_Cnty-24x36\_02.dgn). The 11" x 17" sheet files will be attached in the sequence shown below.



13. If the **Create PDF** option was selected the Batch Plot dialog will appear while County Sheet Composer builds the batch plotting information and submits the PDF batch plot job. County Sheet Composer will save the Batch Plot .job file along with the PDF.